



Principles of Psychology
The University of Toledo
College of Arts and Letters
PSY 1010-903 CRN: 14078

Instructor: Ms. Fawn Caplandies
Email: fawn.caplandies@rockets.utoledo.edu
Office Hours: MW 11-12 or by appt.
Office Location: UH 6505

Term: Spring 2017
Class Location: Online

Undergrad TA: Charles Vogel
Undergrad TA Email:
Charles.Vogel@rockets.utoledo.edu

COURSE/CATALOG DESCRIPTION

- A survey of the branches of psychology and the scientific approach to the study of behavior.

STUDENT LEARNING OUTCOMES

- This course is part of our institutional **General Education Program** and supports the general education outcomes of
 1. Scientific & Quantitative Reasoning and Literacy
 2. Communication.



1. learning and cognition
2. individual differences, psychometrics, personality, and social processes, including those related to sociocultural and international dimensions
3. biological bases of behavior and mental processes, including physiology, perception, motivation, and emotion

You should check your university email frequently for messages about the course. You should also log in to Blackboard/REVEL every day to put in a little study time and to check for announcements. If you are having difficulty with the course concepts, please let

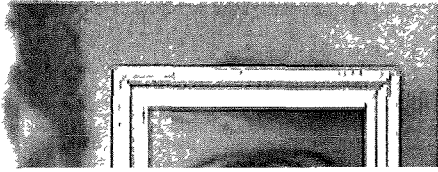
me know so that I can review those topics or provide individual explanations



Psychology Research Exposure

- To introduce students to the research methodology of psychology, all students in

Psychology 1010 (PSY 1010) and Psychology 1011 (PSY 1011)



PREREQUISITES AND COREQUISITES: None

**REQUIRED TEXTS AND ANCILLARY
MATERIALS**

2



ACADEMIC POLICIES

Contacting Me: I am happy to help you out if you are struggling in the course, so feel free to



- Use the computers for non-exam related work (printing documents, email, etc.).
Get in, get out.
- Complain to me that “you couldn’t do the exam because the lab wasn’t open”.

open.

GRADING

Assignments and exams are graded as they are submitted and will be available for you to review

all the questions, especially the ones you miss—re-read the textbook sections that cover any missed questions. Some of these may appear on the final exam.

REVEL End of Chapter Quizzes: You will complete a final, longer, chapter quiz on REVEL.

This will be due at the end of the week (Friday) of the week the chapter is assigned. Note: If we cover more than one chapter in a week, quizzes will be due for all chapters covered on Friday. These quizzes will be worth 5 points each in REVEL (Revel will show that they are worth 75). You will have up to three attempts per question, however you will

APA style can be reviewed [Purdue Owl](#). With each reference, you should explain how it will be

terms that might be helpful in your final paper. You should have at least 3 sentences explaining why you've chosen to use this source per reference.

Step 4:

test you should explain why you think that will happen. Your introduction should

have provided some clues for how an experiment on your topic might pan out.

Your message should be at least 1 full page but no more than 2. You don't need a

now cover page. Write it as if you were just continuing writing the lab report.

The Writing Center provides free, face-to-face and online tutoring for writers in all disciplines. The staff can help you with a variety of writing assignments.

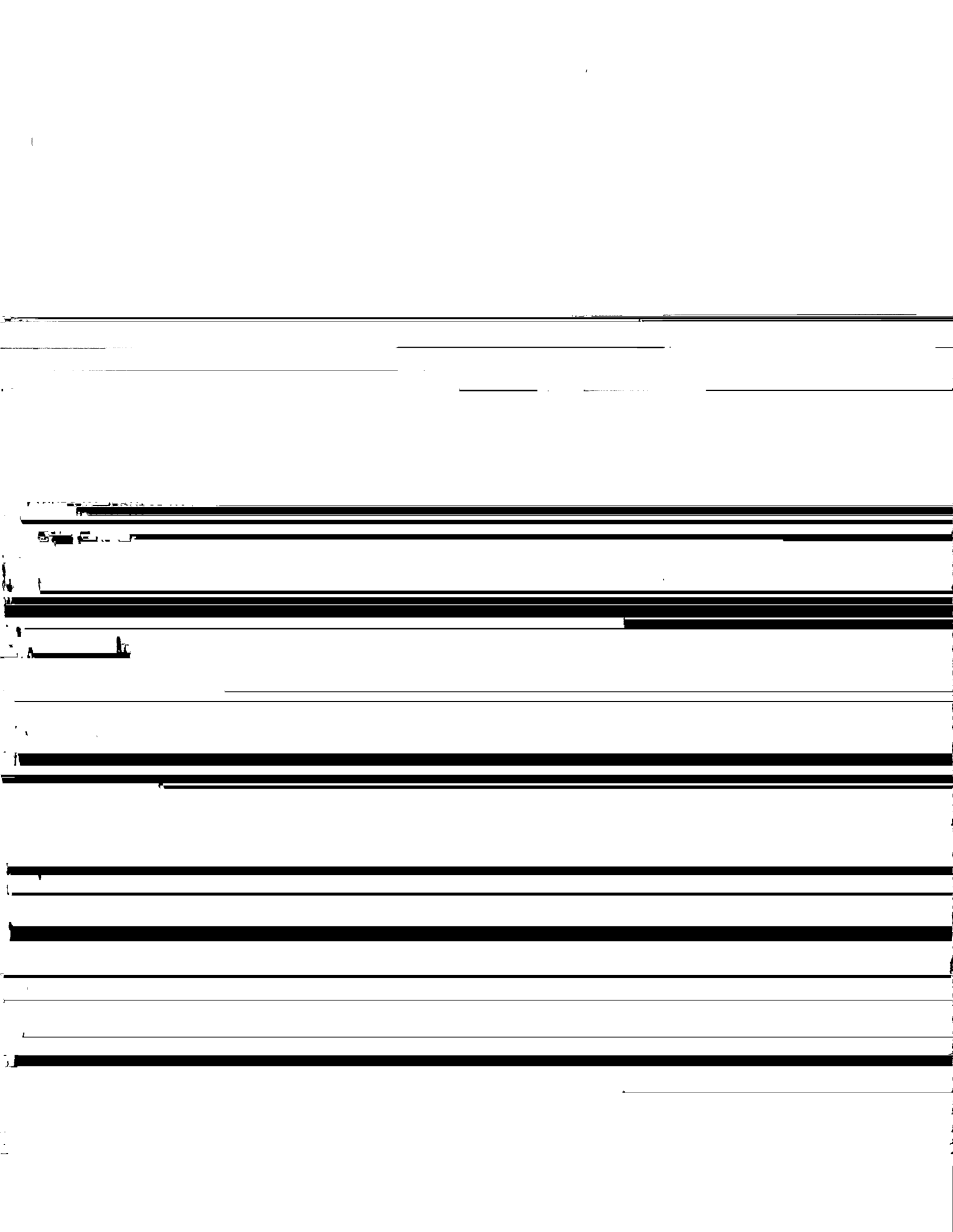
The Counseling Center can help you with transitioning to college and maintaining a healthy lifestyle. If you or a friend ever feel overwhelmed adjusting to college or in need of crisis intervention or mental health services, please contact the Counseling Center.

A Success Coach has been assigned to all new students to help navigate the college

experience by serving as a single point of contact. Your Success Coach can help you build skills, refer you to support services, and aid in your overall success so be sure to stay connected to him or her throughout your academic journey. If you need assistance

Tentative Schedule (Subject to Change) JANUARY 2017

SUNDAY	MONDAY	TUESDAY	WEDNESDAY	THURSDAY	FRIDAY	SATURDAY
--------	--------	---------	-----------	----------	--------	----------



SUNDAY	MONDAY	TUESDAY	WEDNESDAY	THURSDAY	FRIDAY	SATURDAY
--------	--------	---------	-----------	----------	--------	----------



SUNDAY	MONDAY	TUESDAY	WEDNESDAY	THURSDAY	FRIDAY	SATURDAY
	1 FINAL EXAM (Must be taken in III)	2 FINAL EXAM (Must be taken in III)	3 FINAL EXAM (Must be taken in III)	4 FINAL EXAM (Must be taken in III)	5	6